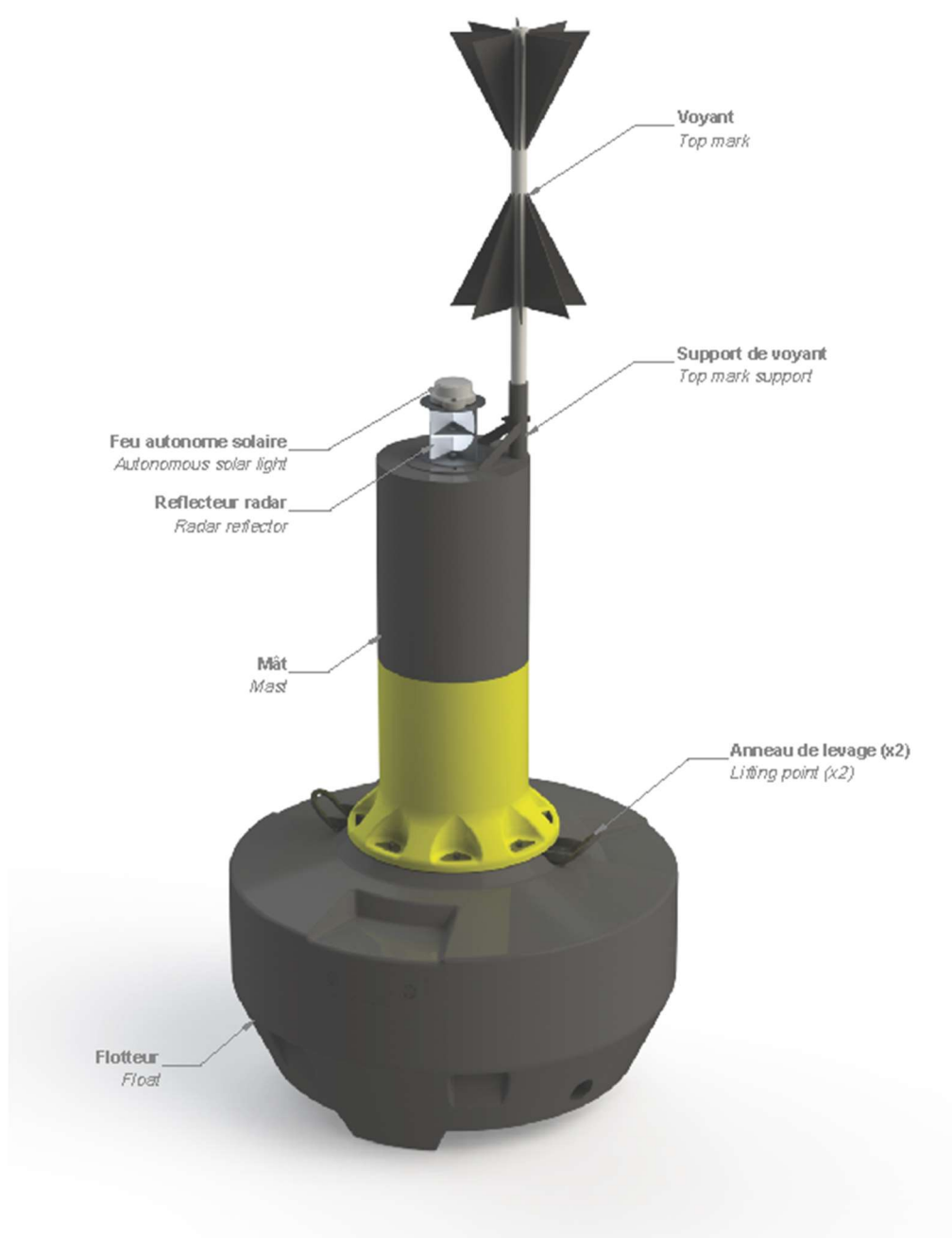
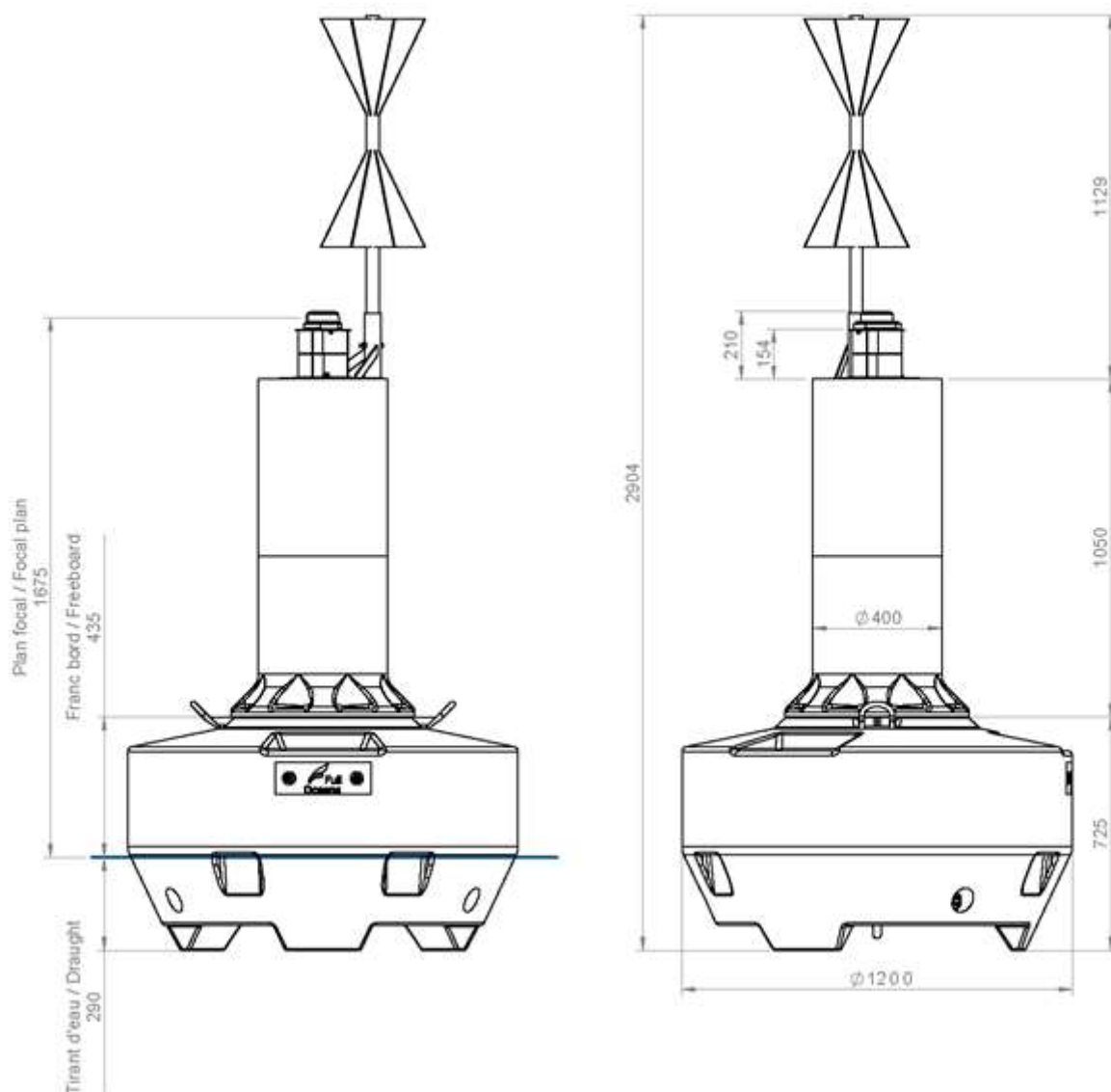


# FLC1200

## Documentation Technique / Technical Documentation





Spécification générales General Specifications		
<b>Masse / Weight</b>	kg	127
<b>Surface Visible / Visible Area</b>	m <sup>2</sup>	1,1
<b>Flottabilité / Submergence</b>	kg /cm	11

Spécifications matière Material specifications	
<b>Structure / Structure</b>	Acier S235 galvanisé / S235 steel galvanized
<b>Flotteurs / Floats</b>	PE Icorene 3575 / Icorene 3575 PE
<b>Mât / Mast</b>	PE Icorene 3575 / Icorene 3575 PE
<b>Voyant Passif / Top Mark</b>	PVC rigide & nylon / Rigid PVC & Nylon
<b>Réflecteur Radar / Radar Reflector</b>	Aluminium 5083/5086 marine grade / Aluminium marine grade 5083/5086
<b>Lest / Ballast</b>	Fonte grise / Cast iron

Ø1200 SPECIFICATIONS						
Général / General		Matières / Materials		Quantité / Quantity	Dimensions (mm)	Masse / Weight (kg)
Diametre / Diameter (mm)	1200	Lest / Ballast	Fonte grise / Cast iron	3	181,3x143,4x113,3	14,71
Masse / Weight (kg)	126,93	Structure	Acier S235J2G3 galvanisée / galvanized steel S235J2G3	1	819,9x620,7x110	10,47
Volume (l)	570	Flotteur / Float	Polyéthylène haute densité / High density polyethylene	1	Ø1210x725 ep 8	34,96
Plan focal / Focal plane (mm)		Mousse / Foam	Polyuréthane 40 kg/m <sup>3</sup> / Polyurethane 40 kg/m <sup>3</sup>	1	-	20,46
Avec RER / With RAR + M550	1675	Mât / Mast	Polyéthylène haute densité / High density polyethylene	1	Ø570x1050xØ400 ep4	7,84
Avec RER / With RAR + M650H	1780	Voyant / Topmark	PVC rigide & nylon / Rigid PVC & nylon	option	250x810xØ40	2,74
*SER : Surface équivalente radar / Equivalent radar surface		Support de voyant / Topmark support	Aluminium 5083/5086 qualité marine / Aluminium marine grade 5083/5086	option	320x250x204	1,01
		Reflecteur radar / Radar reflector	Aluminium 5083/5086 qualité marine / Aluminium marine grade 5083/5086	option	Ø170x150 (*SER : 10m <sup>2</sup> )	0,84
		Feu / Lantern	CARMANAH M550	option	154x117x56	0,37
			CARMANAH M650H	option	176x170	1,58
		Visserie / Screws	-	1	-	2,53

Ø1200 MARQUES SPECIALES / SPECIAL MARKS SPECIFICATIONS						
Général / General		Matières / Materials		Quantité / Quantity	Dimensions (mm)	Masse / Weight (kg)
Diametre / Diameter (mm)	1200	Lest / Ballast	Fonte grise / Cast iron	3	181,3x143,4x113,3	14,71
Masse / Weight (kg)	123,62	Structure	Acier S235J2G3 galvanisée / galvanized steel S235J2G3	1	819,9x620,7x110	10,47
Volume (l)	570	Flotteur / Float	Polyéthylène haute densité / High density polyethylene	1	Ø1210x725 ep 8	34,96
Plan focal / Focal plane (mm)		Mousse / Foam	Polyuréthane 40 kg/m <sup>3</sup> / Polyurethane 40 kg/m <sup>3</sup>	1	-	20,46
Avec RER / With RAR + M550	1953	Mât / Mast	Polyéthylène haute densité / High density polyethylene	1	Ø570x1050xØ400 ep4	7,84
Avec RER / With RAR + M650H	2058	Voyant / Topmark	Aluminium 5083/5086 qualité marine / Aluminium marine grade 5083/5086	1	428x244x170	1,28
*SER : Surface équivalente radar / Equivalent radar surface		Feu / Lantern	CARMANAH M550	option	154x117x56	0,37
			CARMANAH M650H	option	176x170	1,58
		Visserie / Screws	-	1	-	2,53

**QUELQUES EXEMPLES AVEC OPTIONS / FEW EXEMPLES WITH OPTIONS**

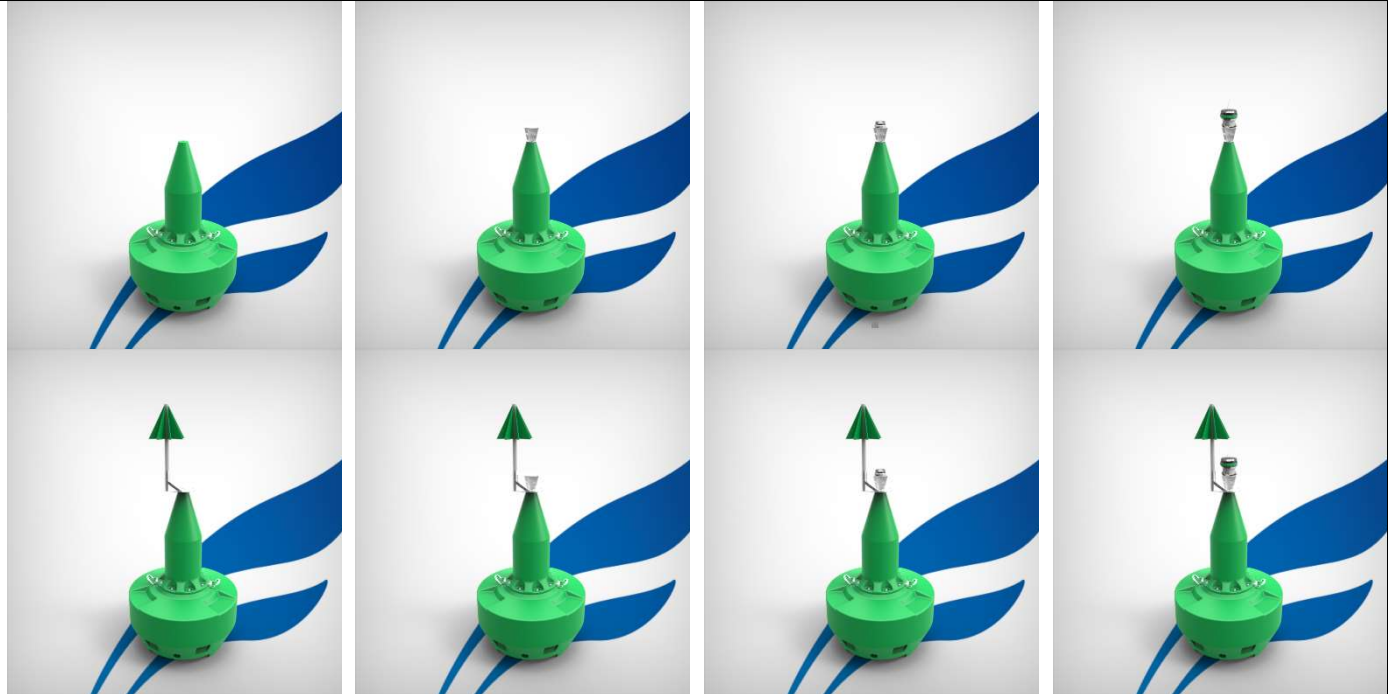
CARDINALE EST/ CARDINAL EAST



CARDINALE NORD/ CARDINAL NORTH



LATÉRALE CONIQUE / LATERAL CONIC



Toutes les configurations possibles sur le site  
All available configurations on website

[www.fulloceans.com](http://www.fulloceans.com)

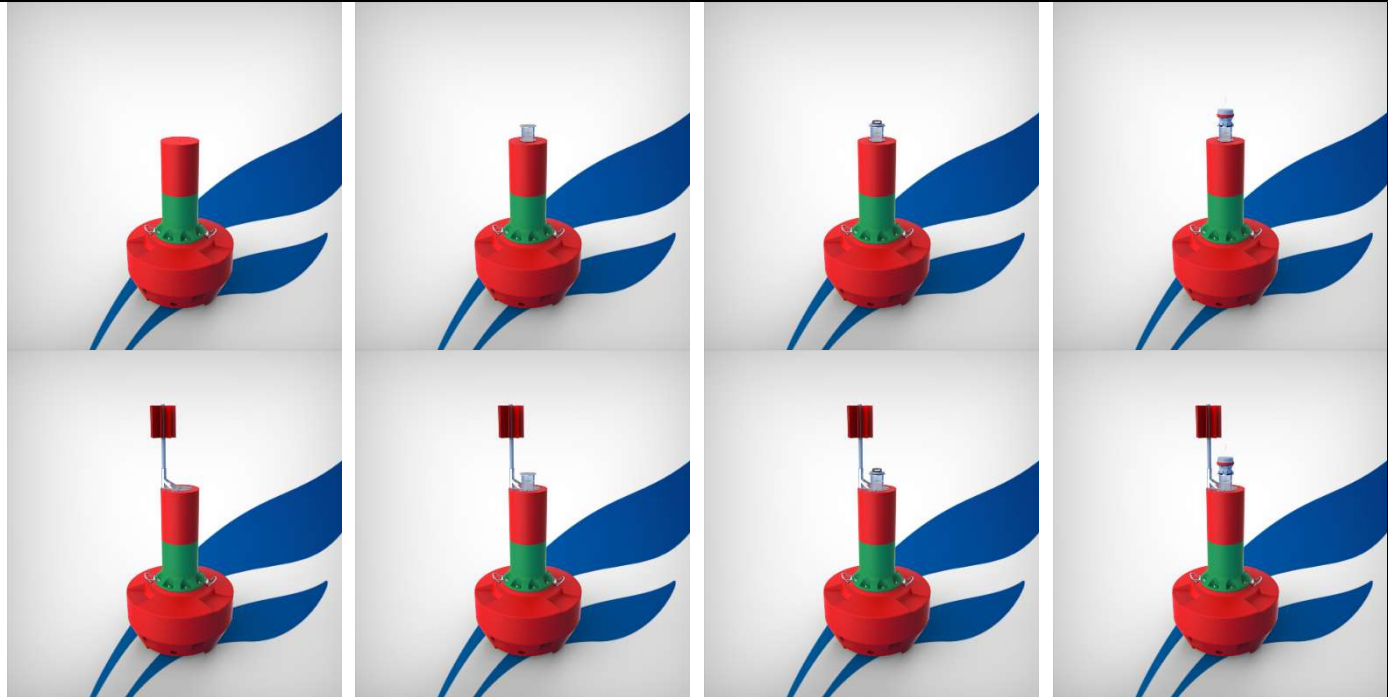
[www.fulloceans.com](http://www.fulloceans.com)

info@fulloceans.com | Fax: +33 (0)485 79 85 82 | Telephone: +33 (0)485 79 85 00

Head office: 171 bis, chemin de la Madrague Ville F-13002 Marseille - France

Manufacturing and warehouse facilities: Zone Industrielle Jean Malèze 25, rue Lavoisier F-47240 Bon Encontre - France

CHENAL PRÉFÈRE / PREFERRED CHANNEL



DANGER ISOLÉ / ISOLATED DANGER

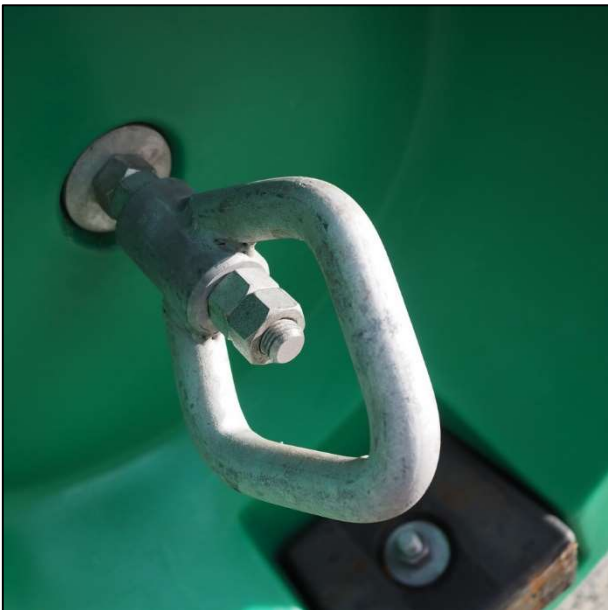


MARQUE SPECIALE CYLINDRIQUE / SPECIAL MARK CYLINDRIC



Toutes les configurations possibles sur le site  
All available configurations on website

[www.fulloceans.com](http://www.fulloceans.com)



Toutes les configurations possibles sur le site  
All available configurations on website

[www.fulloceans.com](http://www.fulloceans.com)

[www.fulloceans.com](http://www.fulloceans.com)

info@fulloceans.com | Fax: +33 (0)485 79 85 82 | Telephone: +33 (0)485 79 85 00

Head office: 171 bis, chemin de la Madrague Ville F-13002 Marseille - France

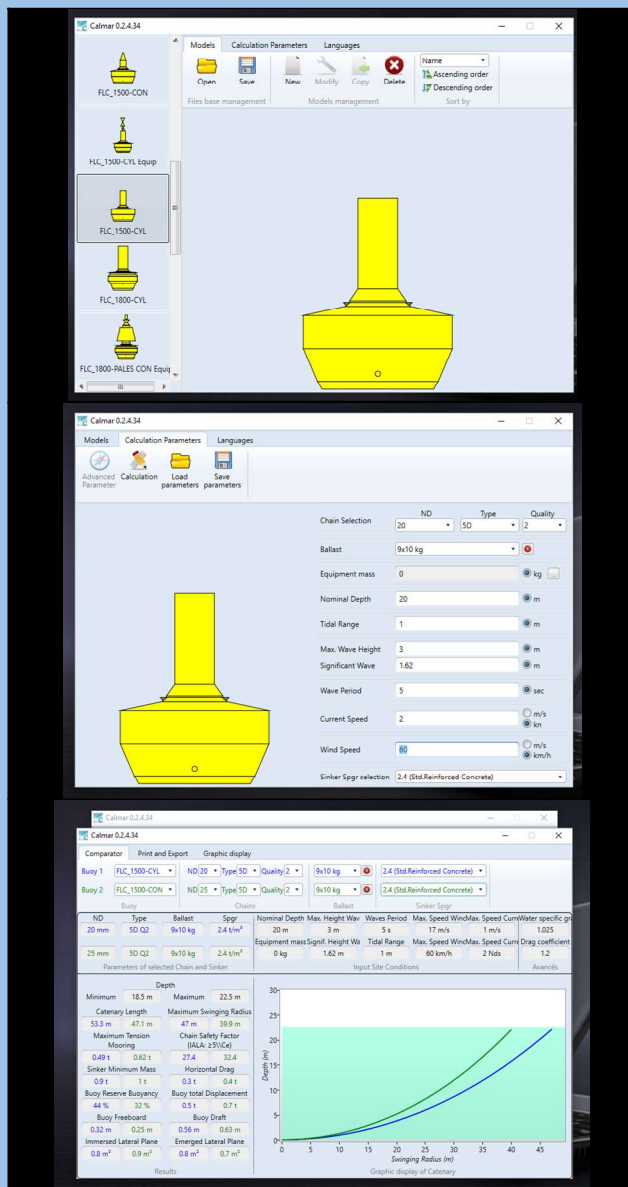
Manufacturing and warehouse facilities: Zone Industrielle Jean Malèze 25, rue Lavoisier F-47240 Bon Encontre - France

## CALCULATE YOUR MOORING SOLUTIONS WITH CALMAR

FullOceans recommends CALMAR the best software for the calculation of your mooring lines. CALMAR is fully adapted to FullOceans buoys, and permits to define the best mooring options according to sea conditions.

CALMAR is easy to use and available in 6 languages.

IALA had endorsed CALMAR as the leading mooring line calculation software.



### Choose your FullOceans model

- FLC1200
- FLC1500
- FLC1800
- FLC2200

### Enter the sea conditions

- Depth
- Tidal range
- Max wave height
- Max wind
- Wave period
- Current speed
- Wind speed

### Get mooring length and much more

- Mooring line length
- Tension
- Sinker mass
- Buoyancy reserve
- Freeboard
- Swinging radius
- Compare chain models
- And much more

Free Download of CALMAR on [www.fulloceans.com](http://www.fulloceans.com)